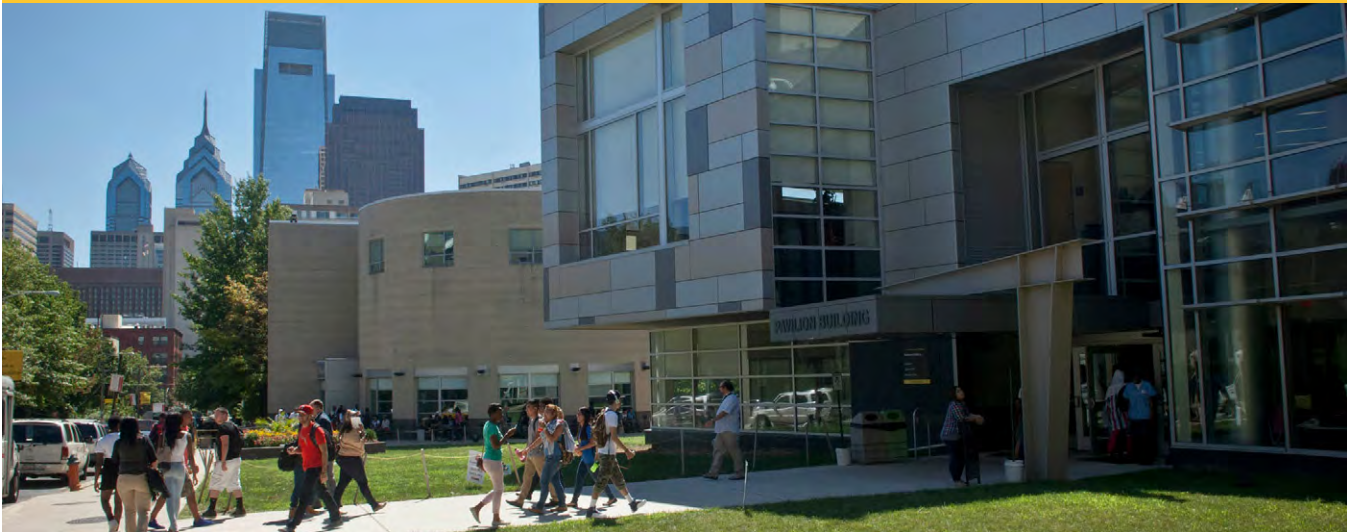


Overview



Community College of Philadelphia

1700 Spring Garden Street
Philadelphia, PA 19130

www.ccp.edu

Community College of Philadelphia has a culturally rich student population with more than 200 international students from more than 50 different countries

The College was recognized by NAFSA: Association of International Educators as a model community college in their latest Internationalizing the Campus report

Community College of Philadelphia is the largest public institution of higher education in Philadelphia, the sixth largest in Pennsylvania

You are Here: Welcome to Philadelphia, Pennsylvania!

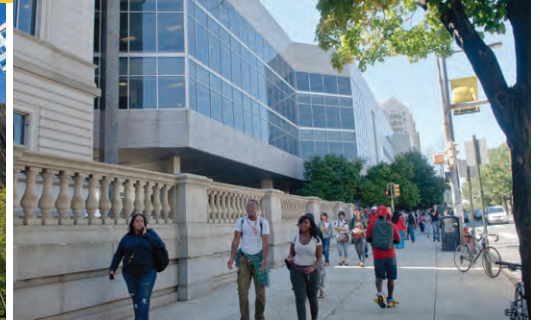
Located in the heart of Philadelphia, Community College of Philadelphia sits in one of the most vibrant urban centers on the East Coast. Founded in 1964, the College acquired the historic Philadelphia Mint building, which is now the centerpiece of the campus.

Philadelphia, also known as the "city of brotherly love", is Pennsylvania's largest city. Its rich history is on display at the Liberty Bell, Valley Forge National Historical Park, and Independence Hall (where the Declaration of Independence and Constitution were signed). Also iconic are the steps of the Philadelphia Museum of Art, immortalized by Sylvester Stallone's run in the film "Rocky." All around town, visitors will find places to try Philadelphia's famous cheesesteaks, an American classic.

With its cultured metropolitan location, Community College of Philadelphia attracts students from a wide range of ages, interests, and backgrounds. In addition to exploring the city's restaurants, museums, and parks, students enjoy a diverse campus life full of clubs, organizations, and athletic activities.

Mission: Community College of Philadelphia is an open-admission, associate-degree-granting institution which provides access to higher education for all. Its programs of study in the liberal arts and sciences, career technologies, and basic academic skills provide a coherent foundation for college transfer, employment, and lifelong learning. The College serves Philadelphia by preparing its students to be informed and concerned citizens, active participants in the cultural life of the city, and enabled to meet the changing needs of business, industry and the professions. To help address

Community College of Philadelphia



broad economic, cultural and political concerns in the city and beyond, the College draws together students from a wide range of ages and backgrounds and seeks to provide the programs and support they need to achieve their goals.

Vision: To serve Philadelphia as a premier learning institution where student success exemplifies the strength of a diverse, urban community college.

Values: Integrity. Academic Excellency. Diversity. Commitment to teaching and learning. Communication. Respect.

Things to Do: Attractions, Arts & Entertainment

Philadelphia is a newly designated World Heritage city and listed as a Lonely Planet Best Place to Visit in 2016. Home to world-renowned cultural centers and research institutions like the University of Pennsylvania, Temple University, and Drexel University, Philadelphia is like an interactive classroom. Explore the birthplace of American democracy by visiting the Liberty Bell, Philadelphia Art Museum, and Fairmount Park. Take a day or weekend trip to New York City or Washington, D.C., both less than 2 hours away by train.

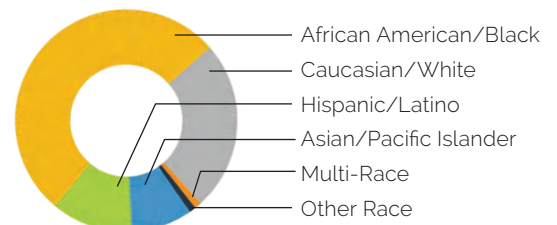


31,239 Total Students

Gender
62% | 38%

Enrollment By Attendance
48% | 52%
Full-time | Part-time

Race/Ethnicity



Getting Here
Philadelphia International Airport (PHL):
17 km from campus

Average Temperatures
Hottest—July to August
Day 30° C; Night 20° C
Coldest—December to January
Day 7° C; Night -2° C

Academics & Faculty

What to Study: Majors and Academic Programs

Community College of Philadelphia offers programs that prepare students for in-demand careers or transfer. The College offers comprehensive academic support, services for students with disabilities, plus an array of career and personal support services.

Areas of study include:

- Architecture and Construction
- Art, Design & Media
- Business and Technology
- Law and Public Service
- Science
- Social and Human Services



FACULTY STATS

Full-time Faculty	395
Part-time Faculty	635
Support Staff	460
Student Faculty Ratio	15:1

Community College of Philadelphia

Meet the Team

Senior Director—Alyson Krawchuk



Alyson Krawchuk is the Senior Program Director for American Honors and American Success programs, overseeing schools and staff in Pennsylvania, New Jersey, and Texas, where her main focus is empowering her teams to put students first every day to ensure their big dreams become reality. She holds degrees from Western Kentucky University and Penn State University.



Ismail

HOME COUNTRY

Egypt

"In the program, we are all from different countries, which is a good thing. We actually meet people from around the world—China, Indonesia, Vietnam, and other places. We all hang out together most of the time, and during the weekends we go out to the center of Philadelphia for dinner or lunch. Sometimes we meet during the week to talk and help each other with homework. It's like a family—we all help each other, and it's nice."

Honors student



Where to Go: Campus Facilities

Dining Options

Dining services include the Colonial Cafes on Main Campus and the Northwest and Northeast Regional Centers, as well as the Bonnell Coffee Express on the Main Campus. All cafes offer a distinct menu with a broad range of options. Vending machines are located throughout the Main Campus and at each Regional Center.

Art on Campus

The College's public art collection is shown at the Main Campus and displayed in hallways throughout the Mint, Bonnell and West buildings, as well as the Center for Business and Industry.

What to Wear

Philadelphia has four distinct seasons which vary greatly, so it is important to prepare.

Temperatures range from hot in the summer (21–32 degrees Celsius) to 8–4 degrees Celsius in the winter, usually accompanied by snow and ice.

Community College of Philadelphia students and faculty dress casually. A typical and acceptable winter outfit might be a sweater, jeans/pants, boots and a winter/heavy jacket. In the summer when the weather is warm, many students wear shorts, skirts, t-shirts, or dresses to class.

Here are some items that are good to have over the course of the year:

- Rain jacket and/or umbrella
- Heavy winter jacket
- A mix of warm weather and cool weather clothing

Health & Wellness

Community College of Philadelphia offers a number of activities and informational events designed to raise awareness throughout the campus community about health issues, health screenings, and lifestyle choices. In addition, the activities support the mission of the College by assisting students through health-related events that foster healthy lifestyles, attitudes, and behaviors via educational programming and outreach.



Community College of Philadelphia



Safety & Security

Community College of Philadelphia is dedicated to providing students an enriching and safe academic experience. Each year, the College creates and evaluates security measures to ensure the safety of students, faculty, and staff so that everyone feels secure and comfortable on campus.

Getting Around: Transportation Services

Philadelphia's SEPTA (Southeastern Pennsylvania Transportation Authority) makes it easy to get around by bus, train, or trolley. SEPTA offers discounted transit passes to college students through their University Pass program. Take advantage and explore the town or travel beyond city limits.

SEPTA City Bus, Train, and Trolley

(215) 580-7800 | www.septa.org

Broad Street Subway: exit at the Spring Garden stop (college is located at 1700 Spring Garden and 17th Street)

Bus route 2: Nicetown to South Philadelphia

Bus route 33: Tioga to Penn's Landing

Bus route 43: Parkside to Northern Liberties and Kensington

Amtrak Train Station

2955 Market Street, 30th Street Station

Philadelphia, PA 19104

www.amtrak.com

Bike Share

Philadelphia is a very bike-friendly city with designated lanes specifically for cyclists. Indego is Philadelphia's bike share program. Bikes are available at stations around the city. To check out a bike, you can purchase a pass or walk up to any kiosk and use your credit/debit card to pay for a one-time trip.

www.rideindego.com



Activities & Athletics

Join the Club: Clubs & Organizations

Get involved with Community College of Philadelphia's student activities and become part of campus life. Connect with other students and faculty to gain valuable teamwork, leadership, and organizational skills to enrich an academic career.

The International Student Organization makes it easy to connect with American and international students from around the world during field trips, game nights, and community service projects. There are many student leadership opportunities as well, through Student Government Association, Phi Theta Kappa Honor Society, Student Programming Board, Student Ambassadors, The Vanguard student newspaper, and Philadelphia L.E.A.D.S.

Clubs include:

- International Student Organization
- African Culture and Traditions Club
- Asian American Association
- Muslim Student Association
- Muslim Women League
- LASO (Latin American Student Organization)
- Phi Theta Kappa (Beta Epsilon Iota)*
- Ritmo Latino Club
- Haitian Student Organization (Club Creole)
- Alpha Beta Gamma (Business Honor Society)
- Christian Women Alliance
- Women of Many Backgrounds (WOMB)
- Gay Straight Alliance

*Phi Theta Kappa (PTK) is the International Honor Society at two-year colleges.



Community College of Philadelphia

Go Play: Athletics

Community College of Philadelphia wants to help students develop their full potential athletically, physically, and academically. Whether it's for a seasoned or an aspiring athlete, or simply an interest in physical fitness, the College offers a full array of opportunities to integrate a healthier, more active lifestyle with an academic career.

The Athletics Center includes a weight-training room, a cardio room with bikes, treadmills and elliptical machines, and an exercise room designed for aerobics classes and yoga.

Join the Community College of Philadelphia Colonials. Choose from one of many men's and women's athletic teams. Be a part of history in the College's first year of being a member of the nationally recognized National Junior College Athletic Association (NJCAA).

Intercollegiate Teams:

- Men's & Women's Basketball
- Men's & Women's Cross Country
- Men's & Women's Tennis
- Men's & Women's Track & Field
- Women's Volleyball

Make time for fitness and fun. Community College of Philadelphia students, faculty and staff, and alumni are welcome to participate in the following **intramural programs**:

- Volleyball Tournament
- Indoor Soccer League
- Ultimate Frisbee Tournament



International Student Housing and Accommodations

Housing Options

Students can choose from one of our partner-supported housing options: The Hamilton, The Edge, or International House Philadelphia.



The Hamilton

The Hamilton—the brand new apartment complex on CCP's campus—is centrally located and comes fully furnished. The Hamilton provides modern, centrally located housing options for students at an affordable price. Students living at The Hamilton are able to walk to the heart of campus in just a few minutes! Apartments are available in both one bedroom and two bedroom layouts. Lease terms are flexible.

Cost Per Student Per Month (\$USD)**	
One Bedroom (Double—2 people total)	Two Bedroom (Quad—4 people total)
\$1,156	\$735

**\$500 deposit is due at the time of lease signing.

Approximately 300 apartments will be available for Fall 2018, with an additional 300 apartments completed later in 2018.

The Edge

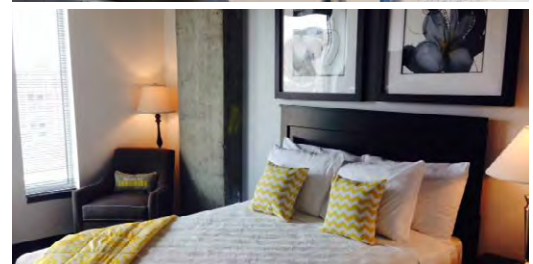
The Edge is the perfect base for your student adventures. Enjoy one of the comedy showcases at the Temple Performing Arts Center, or head to the Student Center to listen to live music, snack on the free food and play a variety of games with classmates on a Friday night. When you need a change of scenery, jump on the bus to Fairmount Park to explore sprawling, green woodland trails, pose with the park's famous Rocky statue, and picnic in the sunshine with friends.

Amenities

- Secure Door Entry
- Cooking Facilities
- Furnished Available
- Shared or Private Bathrooms
- TV In Room
- Bike Storage
- Water Included
- Computer Lab
- Cable TV
- Maintenance Team
- Car Parking
- Gym
- Laundry Facilities
- Library Study Area
- Broadband

Distance to campus

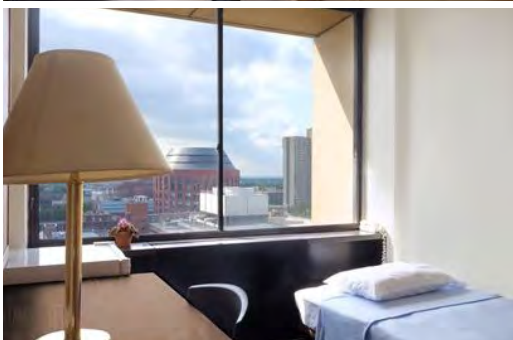
Public Transportation—13 minutes, or driving—10 minutes



Cost Per Student Per Month (\$USD)*	
Double	Single
\$545	\$909

*Application fee: \$55
Security Deposit: \$250

Community College of Philadelphia



Cost Per Student Per Month (\$USD)[†]

	Academic Year	Full Year
Studio	\$1,259	\$1,049
Studio Deluxe	\$1,319	\$1,099
Shared Suite	\$719	\$599
Junior Suite	\$923	\$769
Penthouse Studio	\$1,385	\$1,154

[†]Pricing subject to change. Cost determined by length of stay; \$350 deposit required

International House Philadelphia

International House Philadelphia is a prime location in Philadelphia's vibrant University City neighborhood near University of Pennsylvania, Drexel University, Temple University, Jefferson University, Philadelphia University, University of the Arts and University of the Sciences. It has convenient access to public transportation. Choose from a flexible Housing Agreement with short- or long-term leases.

Amenities

- 24/7 Front Desk Service & Security
- 24/7 Computer Center & Study Room
- Wi-Fi in all common areas
- Local phone service + voicemail in room
- All utilities
- TV lounge, pool & ping pong tables
- On-site theater for films, concerts, events
- Outdoor patio and courtyard
- Quiet study areas
- Music practice rooms
- Bike storage
- On-site cafe
- ATM/vending machines
- Use of conference rooms
- TV cable-ready units
- Laundry facilities
- Linens

Distance to campus

Public Transportation—30 minutes, or driving—15 minutes

Cultural and Social Programs

Resident Members enjoy these exclusive benefits:

- Complimentary admission to most films, concerts and cultural celebrations at International House
- Free on-site English and foreign language classes
- Complimentary social events, dances, parties and receptions
- Leadership development opportunities

Programs at Community College of Philadelphia

American Success

For international students who need additional academic and/or English support, American Success provides the supplemental preparation to ensure successful transfer to a US university.

American Success is a two-year college program where students earn an associate degree and prepare to transfer to a US university for their junior and senior years to complete a bachelor's degree. Students must be 16 years old at time of enrollment, and hold a high school diploma in order to apply for admission.

Honors

The Honors program is for international students with strong academic and English skills who want a supportive, challenging education experience similar to a traditional university. Start at Community College of Philadelphia in the Honors program and then transfer to a US university for the junior and senior years.



Programs Offered & Entry Guidelines

Program	Entry Guidelines		Pathway Components
	Academic Qualification	English Qualification*	
American Success	2.0+ GPA Equivalent	TOEFL iBT: <77 IELTS: <6.0 iTEP: <4.5 PTE: <49 Duolingo: <59	<div>AmericanSuccess</div> <div> <div>Intensive ESL</div> <div>0-3 TERMS</div> </div> <div> <div>Academic Courses</div> <div>2 YEARS</div> </div>
Honors	3.25+ GPA Equivalent	TOEFL iBT: 77+ (20+ writing) IELTS: 6.0+ (6.0+ in writing) iTEP: 4.5+ PTE: 49+ Duolingo: 59+	<div>Honors</div> <div>2 YEARS</div>

Age requirement: Students must be 16 years old at time of enrollment and hold a high school diploma in order to apply for Honors or American Success programs.

*Students applying for American Honors programs are strongly advised to provide an English language exam result aligning with the above floor scores when submitting their application. Contact your Admissions Officer for a complete list of English-proficiency exemptions.

**In accordance with college policy, all students with the exception of those with a TOEFL 77 (overall score) and 20 (writing score) or IELTS 6.0 (overall band) and 6.0 (writing band) or higher will be administered a placement test upon arrival to ensure proper placement.

Community College of Philadelphia



Upon Completion

Transfer to a
US University
2 YEARS

Transfer to a Leading
US University
2 YEARS

Cecilia

HOME COUNTRY

Taiwan

"In the US you need to be more involved in the class. It forces you to think through problems—you don't just sit there and listen to the teacher lecture."

Honors student



Tuition, Fees & Estimated Expenses (\$USD)

	Honors	American Success
Duration	Per Year	Per Year
College Tuition	\$11,448	\$11,448
College Fees	\$1,296	\$1,296
Program Fees	\$1,500	N/A
Health Insurance	\$1,000	\$1,000
Books	\$1,200	\$1,200
Room & Board	\$8,775	\$8,775
Other Costs	\$1,425	\$1,425
Total Costs	\$26,644	\$25,144

The prices and fees above are subject to change. Your Admissions Officer will communicate those changes to you as they become available. Please see page 72 for tuition payment policies and instructions.

*College tuition and fees estimate based on 12 credits per term.

Intake Periods & Deadlines

Intake	Programs Offered	Application Deadline	Orientation Date	Start Date
Fall (Sept.)	American Success Honors	late June	late Aug.	early Sept.
Spring (Jan.)	American Success Honors	late Nov.	early Jan.	early Jan.
Summer (June)	Honors	early May	early June	early June